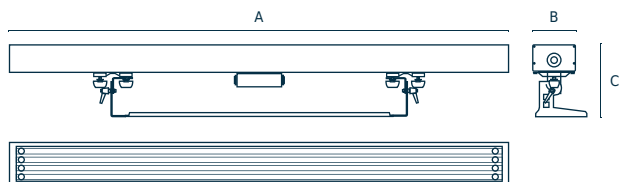


LL PRO NEO II

COMPLIMENTS ON YOUR PURCHASE!

All dimensions are in millimeters

A=1500mm/59" | B=160mm/6.3" | C=214mm/8.4"



Following items are included:

- LL PRO NEO II with RGBW T5 tubes and brackets 1 pc.
- Power plug PowerCon "A" and "B" 1 pc.
- User manual 1 pc.

Additional items needed:

- Data cables with XLR 5pin
- Controller DMX compatible
- Screws and washers 4xM

Content:

- 01 SAFETY INFORMATION**
 - 01.1 Protection from electric shock
 - 01.2 Fire prevention
- 02 PRODUCT SPECIFICATION**
 - 02.1 Technical Specification
 - 02.2 Back panel
- 03 INSTALLATION**
 - 03.1 Unpacking
 - 03.2 Physical installation
 - 03.3 Connecting to AC power
 - 03.4 Control data connecting
 - 03.5 DMX channels
- 04 MAINTENANCE**

01 SAFETY INFORMATION



WARNING!!!

Carefully read before installing, powering or servicing.
Nothing to do if anything misunderstand! Installation can be done only by a qualified professional in accordance with relevant local codes.

01.1 Protection from electric shock



- Shut down power before installation or maintenance.
- Luminaries and recommended AC power supply must be installed by a qualified professional in accordance with relevant local codes. Only acceptable source of AC power and frequency that complies with local building and electrical codes to use.
- Do not use or do not connect the products if the power cable, power plug or fixtures are any way damaged, wet, or if they are overheating.
- Do not modify, alter, or attempt to service the LeaderLight appliance. Doing so will void the warranty.
- Before removing or installing any cover or part of appliance disconnect it from AC power.
- Appliance always connect to earth (eltech.).

01.2 Fire prevention



- Follow all safety consideration.
- Thermostatic switches or fuses never to bypass.
- Device never shield – minimum distance around ventilating slot must be 50mm (2 in.).
- Allowing max. ambient temperature is 40°C (104°F).

02 PRODUCT SPECIFICATION

02.1 Technical Specification

Lamp type:	1500mm: 4xT5 HE 35W or HO 80W *
Lifetime:	20 000 hours
Control data Input:	DMX 512 In/Out with XLR 5pin
Max. input power:	T5 35W:150W, T5 80W:330W
Power connection:	200-264V, 47-63Hz AC In/Out PowerCon
Net weight:	11kg
IP:	IP20
Ambient temp. (Ta):	Maximum 40°C
Materials and finish:	Housing: powder-painted anodized aluminium in black (other colours on request)
Installation:	Surface mounting

02.2 Back panel



Control LEDs Indication

POWER ● DATA ●

LED	INDICATION	STATUS
POWER (Green)	blinking –1Hz	OK - inside fixture is everything correct
DATA (Yellow)	light off	NO DMX512 signal
DATA (Yellow)	blinking – 4Hz	OK- income correct DMX512 signal
DATA (Yellow)	fast blinking	NON correct digital signal
POWER (Green)	alternate blinking	Auto Run
DATA (Yellow)		

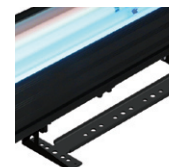
03 INSTALLATION

03.1 Unpacking

- Unpack carefully.
- This is electronic equipment and should be handled carefully.
- Damaged delivered package or if are any mechanical parts broken – it must be claim immediately by the transport company. Photo pictures as evidence are valuable for future claim.

03.2 Physical installation

- Loading capacity of bearing area has to be at least 10 times the weight of all device clusters (luminaries, clamps, cables, ...).
- Hairbreadth from combustible materials is 0,5m.



1. Installation adjustable brackets to body LL PRO NEO

RECOMENDATION !

Before start, in order to obtain the full 20.000 hour life time, new fluorescent tubes must be burned in for 100 hundred hours at full power.

03.3 Connecting to AC power



- To tackle all Safety Information- 01!
- For protection from electric shock, the device must be grounded (earthed)!
- It is not necessary to open the fixture before power supply. Power supply is solved simple with Neutrik PowerCon connectors.
- The fixture is equipped with auto-switching power supply that automatically adjusts to any 50-60Hz AC power source from 100-260V.

- Cord plug connections:

Symbol	Pin	Wire Colour	Screw (US)
L	live	brown	yellow or brass
N	neutral	blue	silver
⏏	ground (earth)	yellow/green	green

03.4 Control data connecting

- Control data cable length is specified by Norm IEC929 Annex E4.
- It is not necessary to open the fixture before connecting of DMX512 control signal. Interconnections are realized by Neutrik XLR 5pin In/Out connectors.
- Pin connections:
 - Pin 1 – ground
 - Pin 2 – signal negative
 - Pin 3 – signal positive

03.5 DMX channels - subject to change

- The latest version of DMX channels appendix are on the websites - www.leaderlight.eu

Ch.	Mode1: Dip2=Off Dip3=Off	Mode2: Dip2=Off Dip3=On	Mode3: Dip2=On Dip3=On
1	Red	Red	Red
2	Green	Green	Green
3	Blue	Blue	Blue
4	White	White	White
5		Preheat (0-30%=No Preheat, 30%-70%=Preheat Type1, 70%-100%=Preheat Type2)	Preheat (0-29%=No Preheat, 30%-69%=Preheat Type1, 70%-100%=Preheat Type2)
6			Master

Preheat Type1 = Preheat - hEATING / Preheat Type2 = min. level

Functions DipBCD (rotating switch RS1-"100", RS2-"10", RS3-"1")

DipBCD = 000	= DMX address 001 (AutoReset -Generate reset function if you switch off/on power supply)
DipBCD = 001 - 512	= DMX address 001 - 512

Functions Dip (switch Dip1, Dip2, Dip3, DIP4)

Dip2 = On	= add Master channel
Dip3 = On	= add Preheat channel
Dip1 = On, Dip4 = Off	= AutoTest : all channels on 100%
Dip4 = On	= AutoRun : functions rotating switch: RS1 = Program 0-9, RS2 = StepTime, RS3 = FadeTime

Order code Product name

LL05 405.1	LL PRO NEO II 4x80W/35W RGBW
------------	------------------------------

Accessories:

LL05 674.1	LL BARNDORF PRO NEOII 1500
LL05 690	LL DIFFUSION GLASS PRO NEO II 1500 (LL05 400)
LL05 700.1	LL BRACKET PRO NEO II FIX
LL05 T5-8xx	LL T5 FILTER 80W - 10 colours (colour on request)
LL05 T5-5xx	LL T5 FILTER 54W - 10 colours (colour on request)

Note: delivery with lamps

04 MAINTENANCE

- To tackle all Safety Information- 01!
- Damage caused by inadequate cleaning or maintenance is not covered by warranty.
- Regular cleaning is demand (dust, dirt, ...).

Maintenance policy:

- Unplug mains before maintenance and at least 10 minutes cool off
- Appliance do not illegal open or demount
- Clean-up dust only from outer surface
- Use vacuum or dumpy duster (warm water)
- Before reinstalling to check failure-free state – no wet parts!

ENVIRONMENT

Do not throw away the appliance with the normal household waste at the end of its life, but hand it in at an official collection point for recycling. By doing this, you help to preserve the environment.



Mounting of LL PRO NEO II RGBW

Mounting on stage is easy using various accessories as seen below. The brackets are connect by Camlocs.



- Camloc 1/4 turn fasteners**
- Safe mechanical quick release fastener systems
 - Locking/unlocking by quarter turn
 - Hand operated
 - Service-friendly, time-saving and cost cutting
 - Vibration-resistant



- Flexible bracket . standard delivery



- Flexible and fix bracket

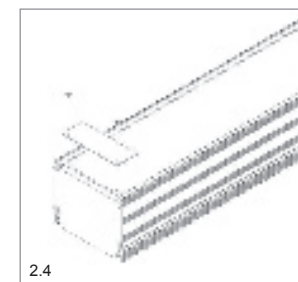
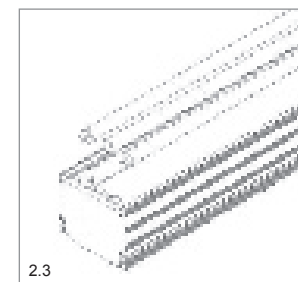
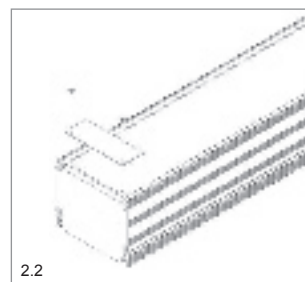
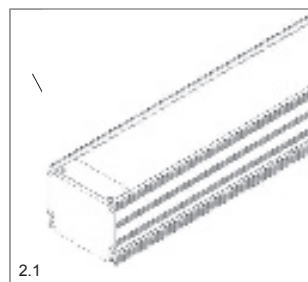


- Fix bracket



Insertion or exchange of fluorescent tubes

It is not necessary to open the fixture for insertion or exchange of tubes. On both sides of the fixture are small cover pieces with 2 screws (Figure Nr. 2.1). Remove these small pieces on both sides of the LL PRO NEO light (Figure Nr. 2.2).



So you will get free space for insertion or exchange of fluorescent tubes (Figure Nr. 2.3). Carefully remove each of the tubes by rotating them (at the ends) until you are able to pull one end out, and then remove the entire tube. By remounting follow these instructions backwards (Figure Nr. 2.4).

